



# Abilene, TX (Brazos River Basin)

**U.S. ARMY CORPS OF ENGINEERS**

**BUILDING STRONG**

**FACT SHEET as of February 21, 2012**

**AUTHORIZATION:** U.S. Senate Resolutions dated 12 August 1954 and 31 July 2007

**TYPE OF PROJECT:** Flood Risk Management

**PROJECT PHASE:** Feasibility



**CONGRESSIONAL INTEREST:** Senators Hutchison (TX) and Cornyn (TX); Representatives Neugebauer (TX-19)

**NON-FEDERAL SPONSOR:** City of Abilene

**BACKGROUND:** The study area is located in Taylor County and the city of Abilene, Texas. This study, a reactivation of a cost-shared feasibility study conducted by the Corps of Engineers in 1991, consists of a reanalysis utilizing new topographic surveys, updated hydraulic models and economics, environmental considerations, and land use changes to determine if a viable project still exists. The feasibility studies have identified over 10,000 structures within the 500-year floodplain of Elm Creek, of which the vast majority are single family residences. The total floodplain investment value exceeds \$1.2 billion based on January 2008 prices and level of development surveyed. Over 35 percent of the development in the Elm Creek watershed lies within the 25-year floodplain and 69 percent lies within the 100-year floodplain, with average annual damages that exceed \$13.0 million. A 100-year event is expected to cause over \$69 million in damages and place approximately 17,000 persons at risk. A 500-year event is expected to cause over \$132 million in damages and place approximately 21,000 persons at risk. The flood of October 1981, approximately a 15-year event, caused losses of an estimated \$11.6 million at the 2008 price level, destroyed 30 homes, and damaged over 450 homes and an unknown number of businesses. In July 2002, an approximate 20-year flood event caused an estimated \$22 million (2008 prices) in damages to 450 residences. The President declared Taylor County a disaster area following both flood events. The most recent flooding occurred in August 2007, when isolated rainfall amounts of as much as eight inches fell in and around Abilene, closing numerous roads and requiring 40 high-water rescues. One home was washed away on Elm Creek and numerous homes and businesses were flooded, affecting over 1,000 residents. The city of Abilene, Texas, is the local sponsor and signed the Feasibility Cost Sharing Agreement on 29 September 2004.

**U.S. ARMY CORPS OF ENGINEERS – FORT WORTH DISTRICT**  
[www.swf.usace.army.mil](http://www.swf.usace.army.mil)

**STATUS:** Continue to work on the plan formulation.

**ISSUES:** To date, study completion has been delayed six years due in part to lack of capability funding. This delay has also resulted in requirements to incorporate new guidance, which increased study costs from the original study estimate presented in 2004.

<b><u>FINANCIAL SUMMARY (\$):</u></b>	<b><u>FEASIBILITY</u></b>
Federal Cost Estimate	1,191,000
Non-Federal Cost Estimate	1,191,000
Total Study Cost	2,382,000
Allocation thru FY 2010	845,000
ARRA Funding	0
Allocation for FY 2011	200,000
Allocation for FY 2012	0
President Budget FY 2013	0
Amount That Could Be Used for FY 2013	10,000
Balance to Complete	136,000

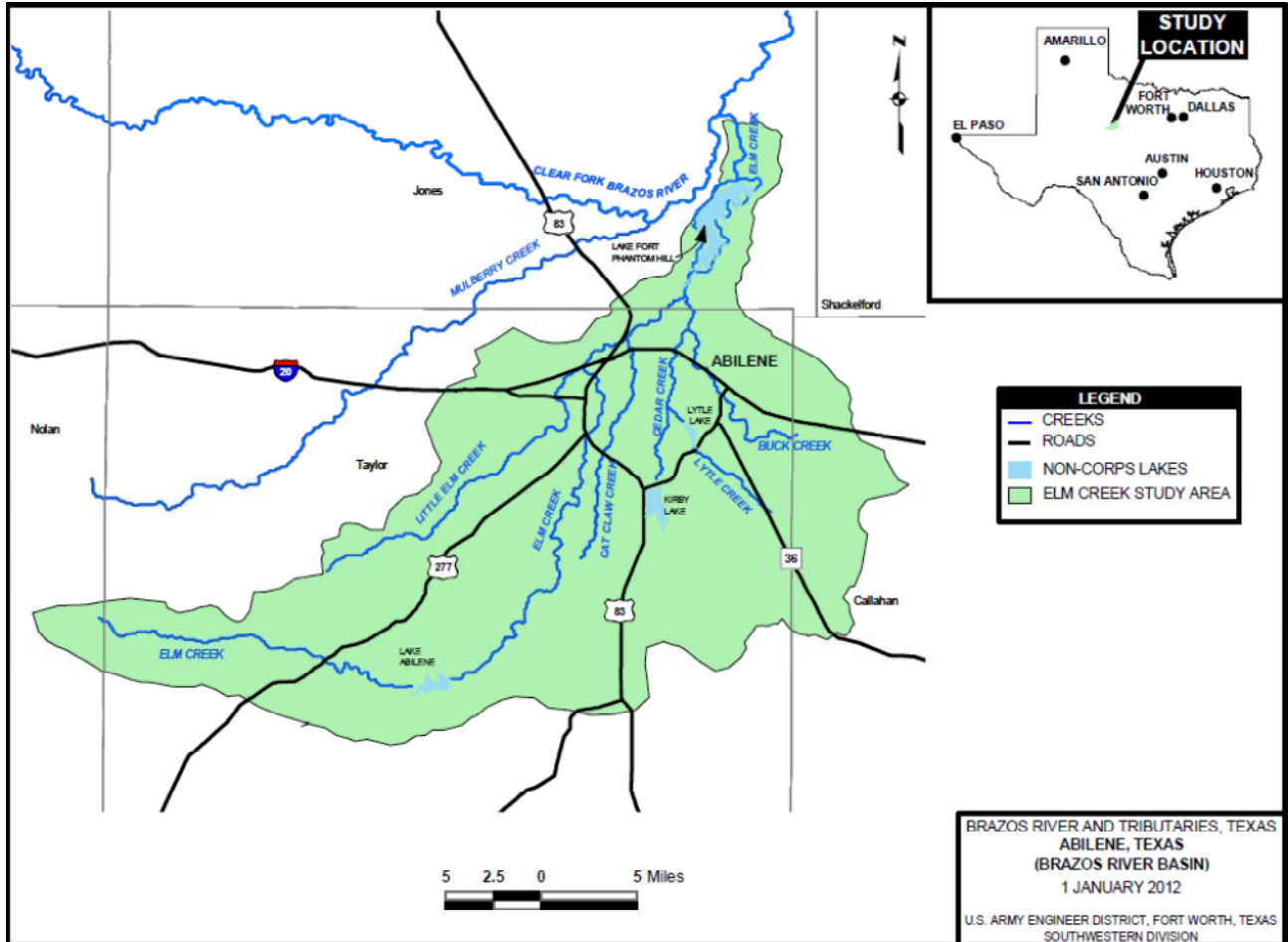
**SCHEDULE:**

**FY 2012 Scheduled Work:** Not in the President's FY2012 budget. Non-Federal funds are being used to conduct the AFB, and initiate the draft Feasibility Report with an integrated Environmental Assessment.

**FY 2013 Budget:** Not in the President's FY2013 budget. The funds requested for FY13 would be used to complete the draft Environmental Assessment; the draft Feasibility Report; the Agency Technical Review; public review responses; and Final report/EA.

**COMPLETION:** With optimum funding, December 2013.

**For more information** regarding the Abilene, TX (Brazos River Basin Study), contact Ms. Stacy Gray, Project Manager, at (817)886-1787 or [stacy.l.gray@usace.army.mil](mailto:stacy.l.gray@usace.army.mil)



U.S. ARMY CORPS OF ENGINEERS – FORT WORTH DISTRICT  
[www.swf.usace.army.mil](http://www.swf.usace.army.mil)