



Lower Colorado River Basin, Wharton/Onion, Tx

U.S. ARMY CORPS OF ENGINEERS

BUILDING STRONG®

FACT SHEET as of February 6, 2012

AUTHORIZATION: WRDA 2007, Section 1001 (43).

TYPE OF PROJECT: Flood Risk Management

PROJECT PHASE: Preconstruction, Engineering and Design (PED)



CONGRESSIONAL INTEREST: Senators Hutchison and Cornyn (TX), Representatives **Doggett (TX-25)** and **Paul (TX-14)**

NON-FEDERAL SPONSOR: City of Austin; Travis County, Texas; and City of Wharton, Texas

BACKGROUND: The Onion Creek watershed, which has an area of approximately 343 square miles, is located in southern Travis and northern Hays counties in Texas. Two major flood events estimated as approximately 40-year events occurred in 1998 and 2001, with hundreds of homes being inundated and many totally destroyed. Another area subject to flooding is located along the banks of the Colorado River in the lower part of the basin, in and around Wharton, Texas, approximately 60 miles southwest of Houston. Wharton's 9,000 citizens have been subject to frequent flooding from both the Colorado River as well as from more localized events. Two major flood events estimated as approximately 25-year events have occurred since 1998. The most recent occurred in November 2004 and inundated approximately 150 homes and businesses, causing \$8 million in damages. The authorized project consists of two separable elements: Onion Creek and Wharton. The Onion Creek separable element has two components: Timber Creek and Onion Creek Forest/Yarrabee Bend. The Timber Creek component consists of the acquisition/removal of approximately 81 residential structures from the 25-year floodplain. The vacated land will be used for recreation and ecosystem restoration, with approximately 40 acres converted to a park and 16 acres restored to riparian woodlands. The Onion Creek Forest/Yarrabee Bend component consists of the acquisition/removal of approximately 410 residential structures from the 25-year floodplain. The vacated land will be used for recreation and ecosystem restoration, with approximately 100 acres converted to a park and 190 acres restored to riparian woodlands. The Wharton separable element consists of approximately 35,600 feet of levees, 2,300 feet of floodwalls, 7,000 feet of channel modifications, and interior drainage features which will effectively remove the vast majority of the city of Wharton (approximately 500 structures) from the 100-year floodplain.

STATUS: Carry-in funding is being used to continue the design of Wharton Phase I.

ISSUES: Collection of rights-of-entries has delayed progress; lengthy review process could impact completion date of Wharton Phase I PED.

<u>FINANCIAL SUMMARY (\$):</u>		<u>PED</u>
Federal Cost Estimate	\$	2,192,000
Non-Federal Cost Estimate		731,000
Total Project Cost	\$	2,923,000
Allocation thru FY 2010	\$	1,722,000
ARRA Funding		0
Allocation for FY 2011		0
Allocation for FY 2012		0
President Budget FY 2013		0
Capability for FY 2013		100,000
Balance to Complete	\$	470,000

SCHEDULE:

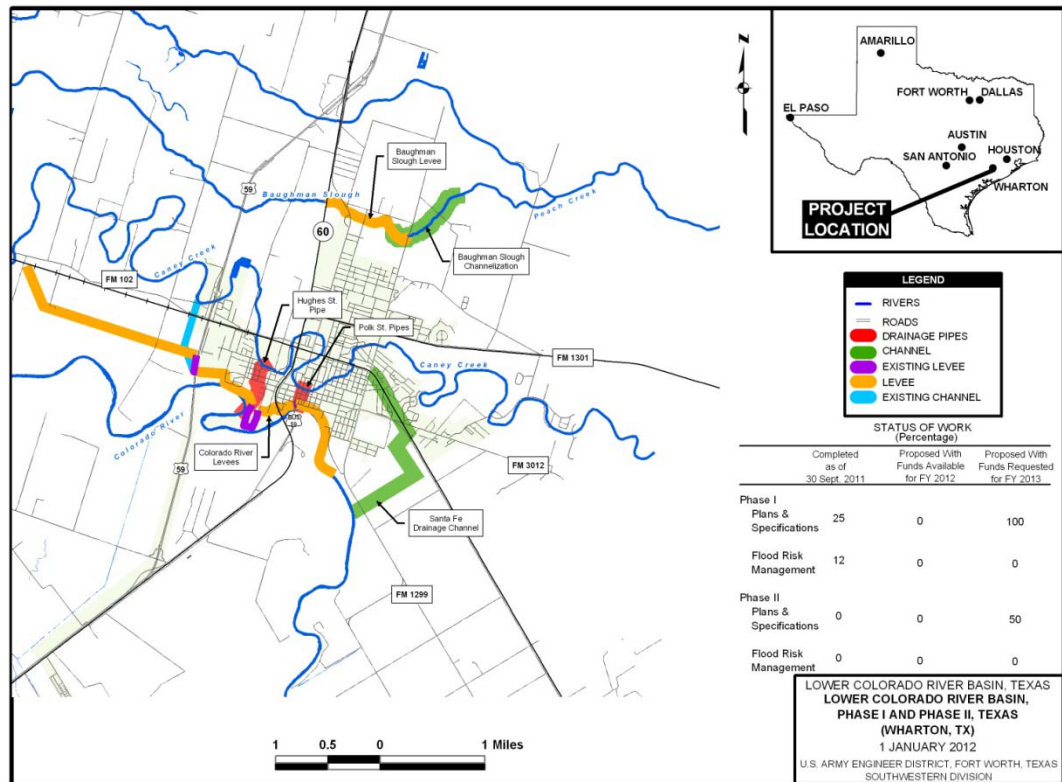
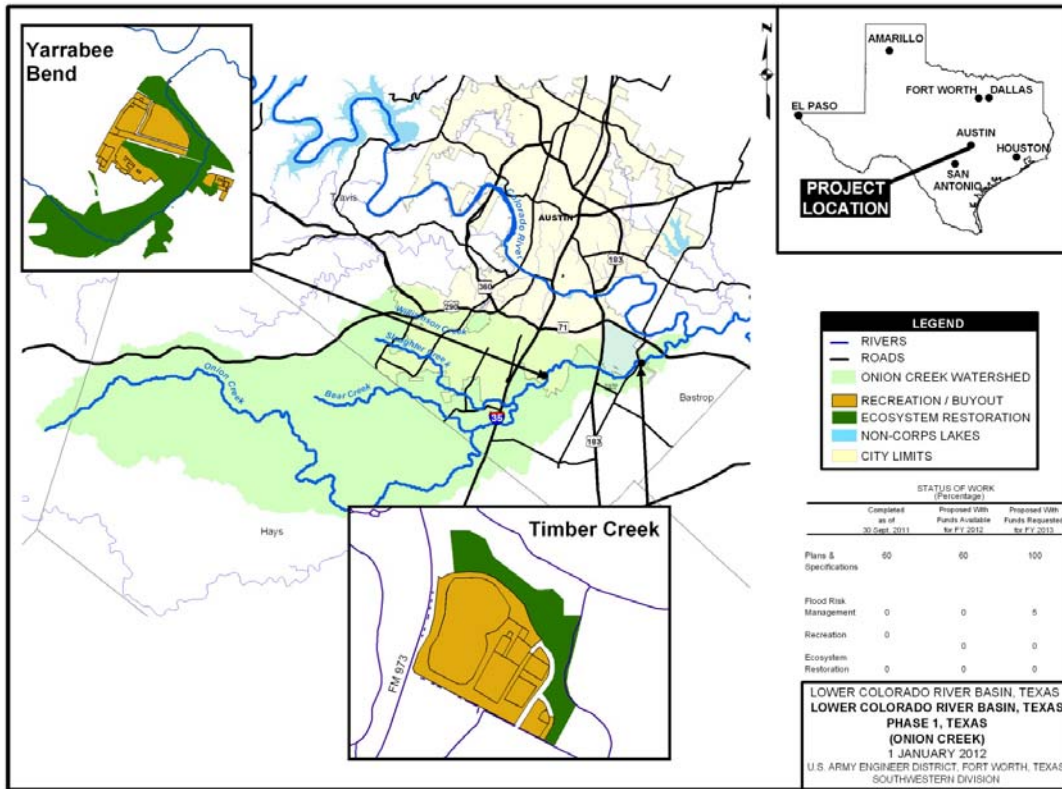
FY 2012 Scheduled Work: Continue the levee design for Wharton Phase I.

FY 2013 Budget: Not in the President's FY2013 budget. If funding were received, it would be used to complete Wharton Phase I PED.

COMPLETION: With optimum funding, the project completion date is September 2013.

For more information regarding the Lower Colorado River Basin, Wharton/Onion, TX, project, contact Kathy Gately, project manager, at (817) 886-1590 or kathleen.e.gately@usace.army.mil.

Lower Colorado River Basin, Wharton/Onion, TX



U.S. ARMY CORPS OF ENGINEERS – FORT WORTH DISTRICT
www.swf.usace.army.mil