



U.S. ARMY CORPS OF ENGINEERS

BUILDING STRONG<sup>®</sup>

FACT SHEET as of February 21, 2012

**AUTHORIZATION:** Section 3, PL 100-676 dated 17 Nov 1988

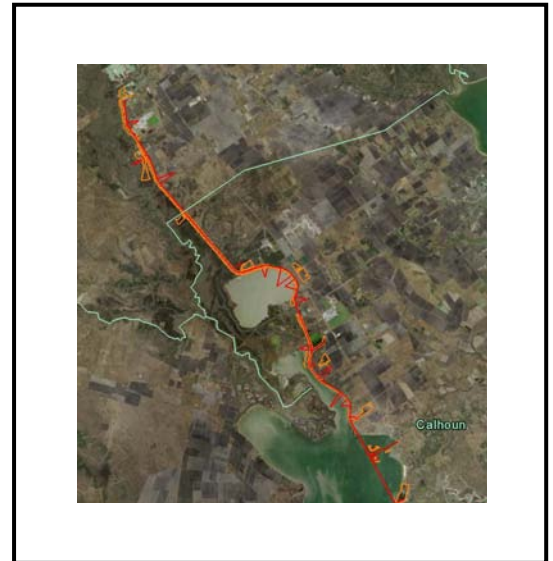
**TYPE OF PROJECT:** Navigation

**PROJECT PHASE:** O&M

**CONGRESSIONAL INTEREST:** Senators Hutchison and Cornyn (TX), Representative Paul (TX-14), and Hinojosa (TX-15)

**NON-FEDERAL SPONSOR:** Port of Victoria

**BACKGROUND:** This navigation project is located in the vicinity of Seadrift and Victoria in Calhoun and Victoria Counties, Texas. The Channel to Victoria project provides a 34.8 mile shallow draft channel (authorized project dimensions 12 x 125 feet) extending from its junction with the main channel of the Gulf Intracoastal Waterway at Mile 492 northwesterly across San Antonio Bay through a landlocked section lying east of the Guadalupe River and terminating at the turning basin near the City of Victoria.



**STATUS:** FY11 activities included incremental raising Placement Area (PA) 1.

**ISSUES:** Placement Area improvements at PA 1 are required before dredging can be performed.

<b><u>FINANCIAL SUMMARY (\$):</u></b>	<b><u>O&amp;M</u></b>
Federal Cost Estimate	N/A
Non-Federal Cost Estimate	N/A
Total Project Cost	N/A
Allocation for FY 2010	\$2,130,000
ARRA Funding	0
Allocation for FY 2011	3,132,000 <u>1/</u>
Allocation for FY 2012	3,450,000
President Budget FY 2013	363,000
Amount That Could Be Used for FY 2013	6,087,000
Balance to Complete	N/A

1/ Includes \$450,000 in Supplemental Funding

**SCHEDULE:**

**FY 2012 Scheduled Work:** FY 2012 activities include dredging Channel to Victoria Upper Reach to project depth and the curation of artifacts recovered during the development of project features.

**FY 2013 Budget:** FY 2013 activities include curation of artifacts recovered from the project (\$113,000) and continuation of the Dredge Material Management Plan (\$250,000). Additional funds could be utilized for improvements to PA 1 to obtain additional dredged material disposal capacity (\$2,000,000); dredging the Victoria Upper Reach to project depth (\$1,919,000) and for dredging the Victoria Upper Reach to the advanced maintenance depth (\$1,805,000).

**COMPLETION:** N/A

**For more information** regarding the GIWW, Channel to Victoria, TX project, contact Mr. Pete Perez, P.E., Deputy District Engineer, Chief, Programs and Project Management Division at (409) 766-3018 or [Pete.G.Perez@usace.army.mil](mailto:Pete.G.Perez@usace.army.mil).



**U.S. ARMY CORPS OF ENGINEERS – GALVESTON DISTRICT**  
[www.swg.usace.army.mil](http://www.swg.usace.army.mil)