



Birch Lake, Oklahoma

U.S. ARMY CORPS OF ENGINEERS

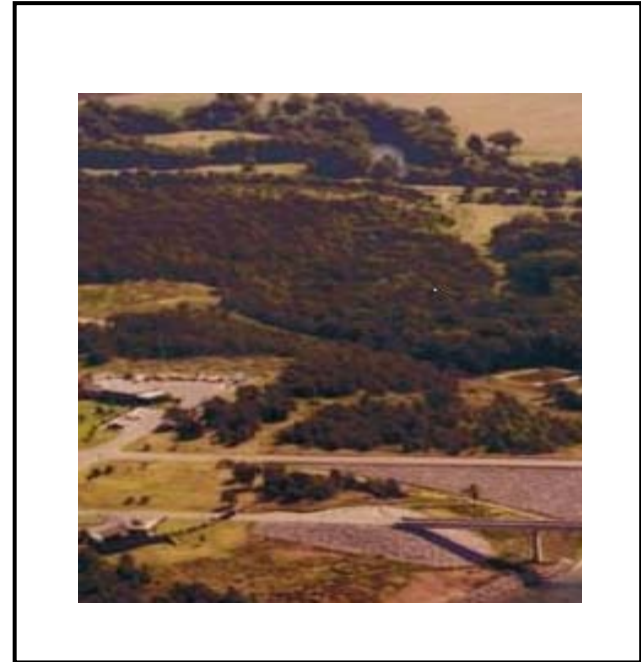
BUILDING STRONG®

FACT SHEET as of February 6, 2012

AUTHORIZATION: This project was authorized under the Flood Control Act approved October 23, 1962, Project Document HD 563, 87th Congress, 2nd Session.

TYPE OF PROJECT: Flood damage reduction, water supply, recreation, environmental stewardship.

PROJECT PHASE: O&M



CONGRESSIONAL INTEREST: Senators Coburn and Inhofe, OK; Representative Lucas, OK-3.

NON-FEDERAL SPONSOR: N/A

BACKGROUND: Birch Lake is located at river mile 0.8 on Birch Creek, a tributary of Bird Creek, about 1.5 miles south of Barnsdall in Osage County, Oklahoma, and about 20 miles southwest of Bartlesville in Washington County, Oklahoma. This project consists of a 3,193 foot earth embankment with an uncontrolled spillway. At conservation pool the lake covers 1137 acres.

STATUS: FY 2011 activities included routine scheduled operations and maintenance activities at the project. There were no major maintenance contracts awarded at Birch Lake during FY 2011.

ISSUES: None.

<u>FINANCIAL SUMMARY (\$):</u>	<u>O&M</u>
Federal Cost Estimate	N/A
Non-Federal Cost Estimate	N/A
Total Project Cost	N/A
Allocation thru FY 2010	N/A
ARRA Funding	\$ 504,000
Allocation for FY 2011	\$ 646,000
Allocation for FY 2012	\$ 957,000
President Budget FY 2013	\$ 809,000
Amount That Could Be Used for FY 2013	\$ 809,000
Balance to Complete	N/A

SCHEDULE:

FY 2012 Scheduled Work: The current FY 2012 budget will be used for routine operations and maintenance activities at this project.

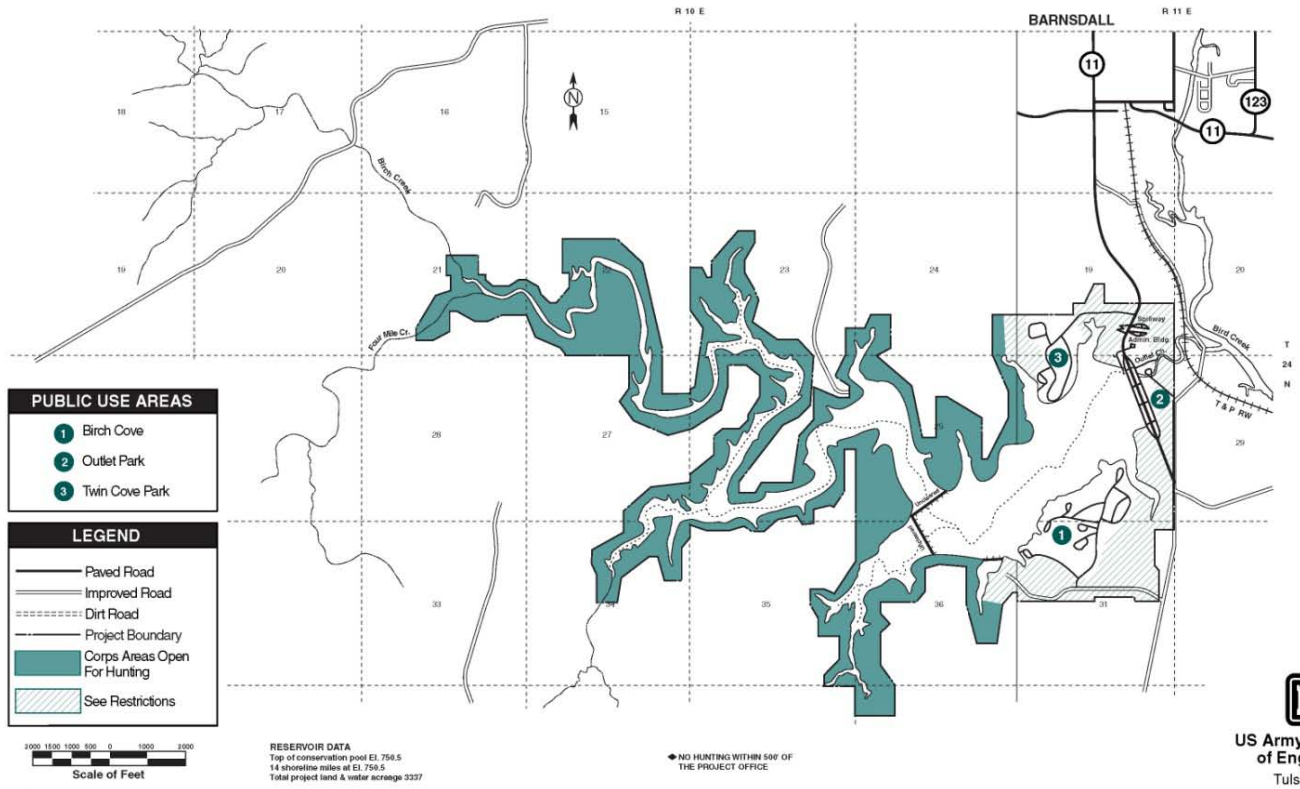
FY 2013 Budget: The FY 2013 President's budget will be used for routine operations and maintenance activities at the project. A portion of the budget will be used to undertake repairs on the service bridge.

COMPLETION: N/A. Operating project.

For more Information regarding the Birch Lake project, contact Preston Hunter, Lake Manager, at (918) 396-3170, or Preston.Hunter@usace.army.mil.

PROJECT MAP BIRCH LAKE, OKLAHOMA

BIRCH LAKE PUBLIC HUNTING AREA



US Army Corps
of Engineers
Tulsa District