



Fort Supply Lake, Oklahoma

U.S. ARMY CORPS OF ENGINEERS

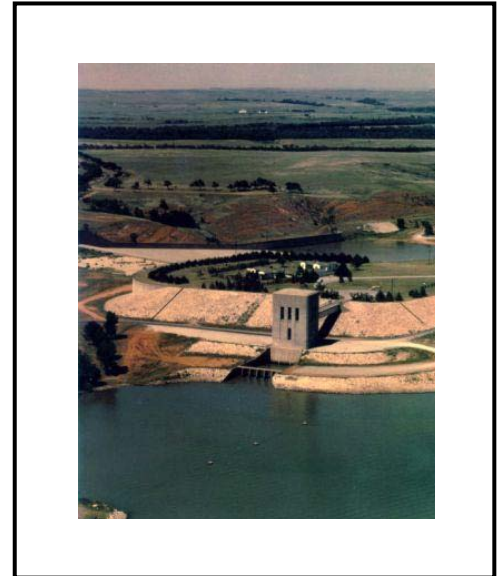
FACT SHEET as of February 6, 2012

BUILDING STRONG®

AUTHORIZATION: This project was authorized under the Flood Control Act of 1936.

TYPE OF PROJECT: Flood damage reduction, recreation, environmental stewardship.

PROJECT PHASE: O&M



CONGRESSIONAL INTEREST: Senators Coburn and Inhofe, OK; Representative Lucas, OK-3

NON-FEDERAL SPONSOR: N/A

BACKGROUND: Authorized in 1936, Fort Supply is one of three flood control lakes constructed on the North Canadian River system upstream of Oklahoma City. Fort Supply Lake is located at river mile 5.5 on Wolf Creek, a tributary of the North Canadian River, about 1 mile south of Fort Supply, Oklahoma and about 12 miles northwest of Woodward in Woodward County, Oklahoma. The structure is a rolled earth-filled dam 11,865 feet long with an uncontrolled, concrete, chute-type spillway in the left abutment. Flow through the outlet works is controlled by three 7x16 foot vertical lift gates. The popularity of the recreation program at Fort Supply Lake has increased significantly in the last few years, even though the project is located in a fairly remote region of northwest Oklahoma and has a conservation pool of only 1820 surface acres. Fort Supply Lake hosted over 280,000 visitors and collected over \$100,000 in recreation user fees in 2010.

STATUS: FY 2011 activities included routine scheduled operations and maintenance activities at the project. One major maintenance contract was awarded at the project in FY 2011 for the design of needed bridge repairs.

ISSUES: None.

<u>FINANCIAL SUMMARY (\$):</u>	<u>O&M</u>
Federal Cost Estimate	N/A
Non-Federal Cost Estimate	N/A
Total Project Cost	N/A
Allocation thru FY 2010	N/A
ARRA Funding	\$1,091,000
Allocation for FY 2011	\$1,058,000
Allocation for FY 2012	\$1,067,000
President Budget FY 2013	\$1,086,000
Amount That Could Be Used for FY 2013	\$1,086,000
Balance to Complete	N/A

SCHEDULE:

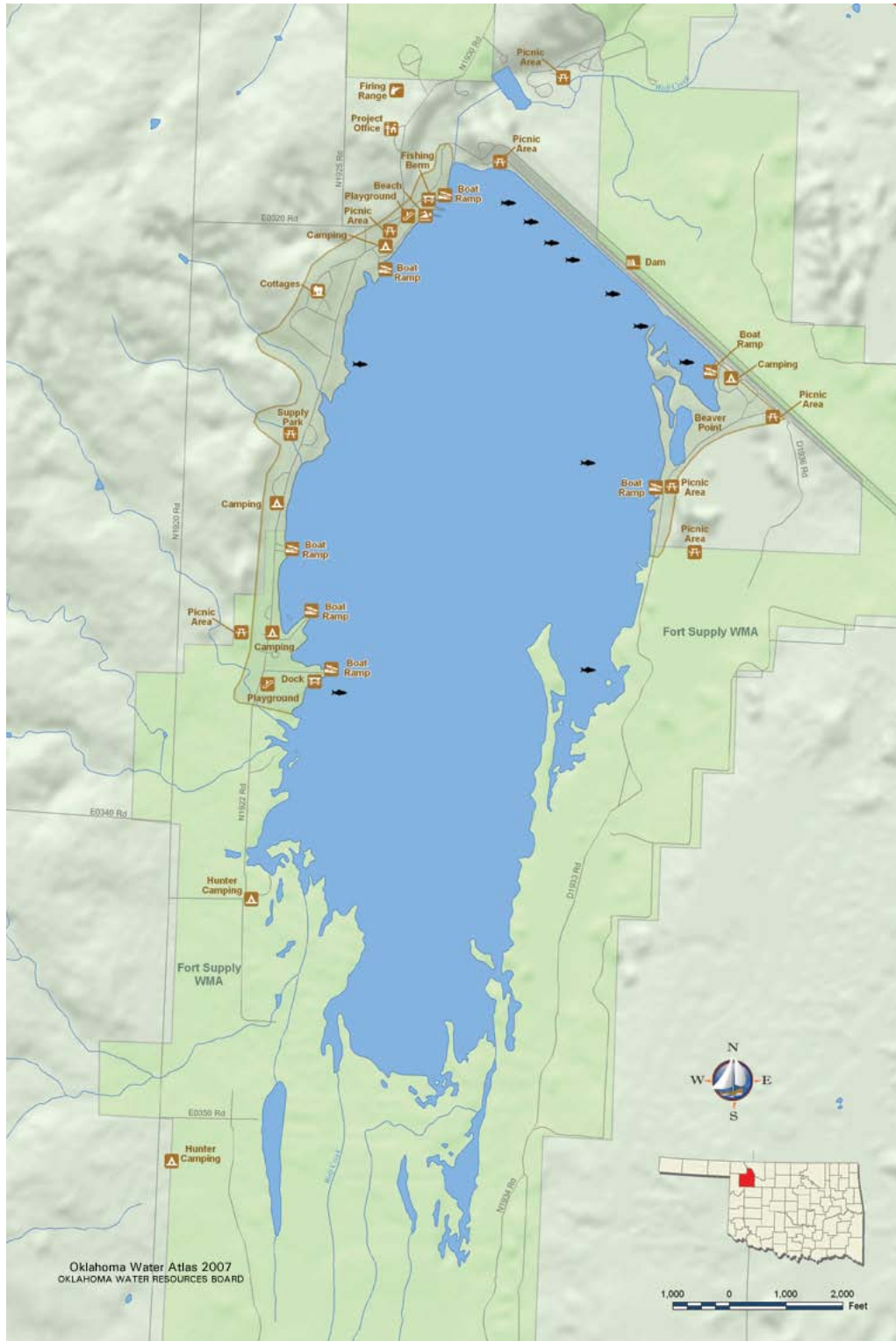
FY 2012 Scheduled Work: The current FY 2012 budget is being used for routine operations and maintenance activities at this project. Major maintenance scheduled at the project for FY 2012 includes repairs to the service bridge and replacing the gate tower doors. A portion of the FY 2012 budget will also be used to install a ground source heat pump system at the project office in order to decrease use of non-renewable energy sources at the project.

FY 2013 Budget: The FY 2013 President's budget will be used for routine operations and maintenance activities at the project.

COMPLETION: N/A. Operating project.

For more information regarding the Fort Supply Lake Project, contact Kathryn Carlson, Lake Manager, at (580) 886-2989 or Kathryn.Carlson@usace.army.mil.

PROJECT MAP FORT SUPPLY LAKE, OKLAHOMA



U.S. ARMY CORPS OF ENGINEERS – TULSA DISTRICT
www.swt.usace.army.mil