



# Hugo Lake, Oklahoma

U.S. ARMY CORPS OF ENGINEERS

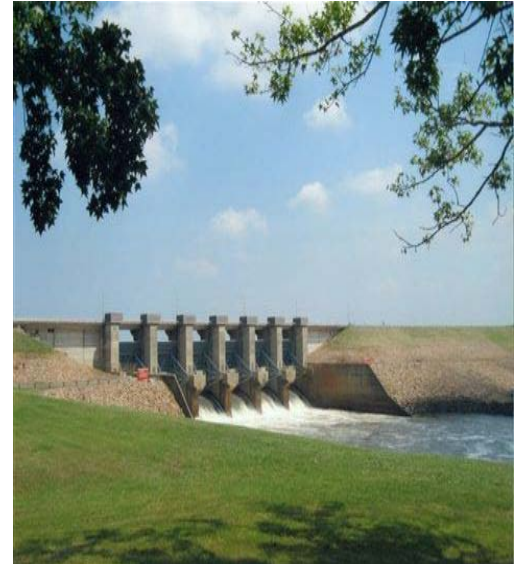
BUILDING STRONG<sup>®</sup>

FACT SHEET as of February 6, 2012

**AUTHORIZATION:** The Hugo Lake Project was authorized under the Flood Control Act of 1946

**TYPE OF PROJECT:** Flood damage reduction, recreation, water supply, environmental stewardship

**PROJECT PHASE:** O&M



**CONGRESSIONAL INTEREST:** Senators Coburn and Inhofe, OK; Representative **Boren**, OK-2

**NON-FEDERAL SPONSOR:** N/A

**BACKGROUND:** This project is located on the Kiamichi River at river mile 17.6 about 7 miles east of Hugo, in Choctaw County, Oklahoma. The dam is a rolled earth embankment 10,200 feet long. The spillway is a gate-controlled, concrete, gravity ogee weir with six 40x50 foot gates. At top of conservation pool the lake covers 13,144 acres.

**STATUS:** FY 2011 activities included routine scheduled operations and maintenance activities at the project. One major maintenance contract was awarded at the project in FY 2011 for repairs to the bulkhead.

**ISSUES:** None.

<b><u>FINANCIAL SUMMARY (\$):</u></b>	<b><u>O&amp;M</u></b>
Federal Cost Estimate	N/A
Non-Federal Cost Estimate	N/A
Total Project Cost	N/A
Allocation thru FY 2010	N/A
ARRA Funding	\$ 888,000
Allocation for FY 2011	\$1,748,000
Allocation for FY 2012	\$1,519,000
President Budget FY 2013	\$1,716,000
Amount That Could Be Used for FY 2013	\$1,716,000
Balance to Complete	N/A

**SCHEDULE:**

**FY 2012 Scheduled Work:** The current FY 2012 budget will be used for routine operations and maintenance activities at this project.

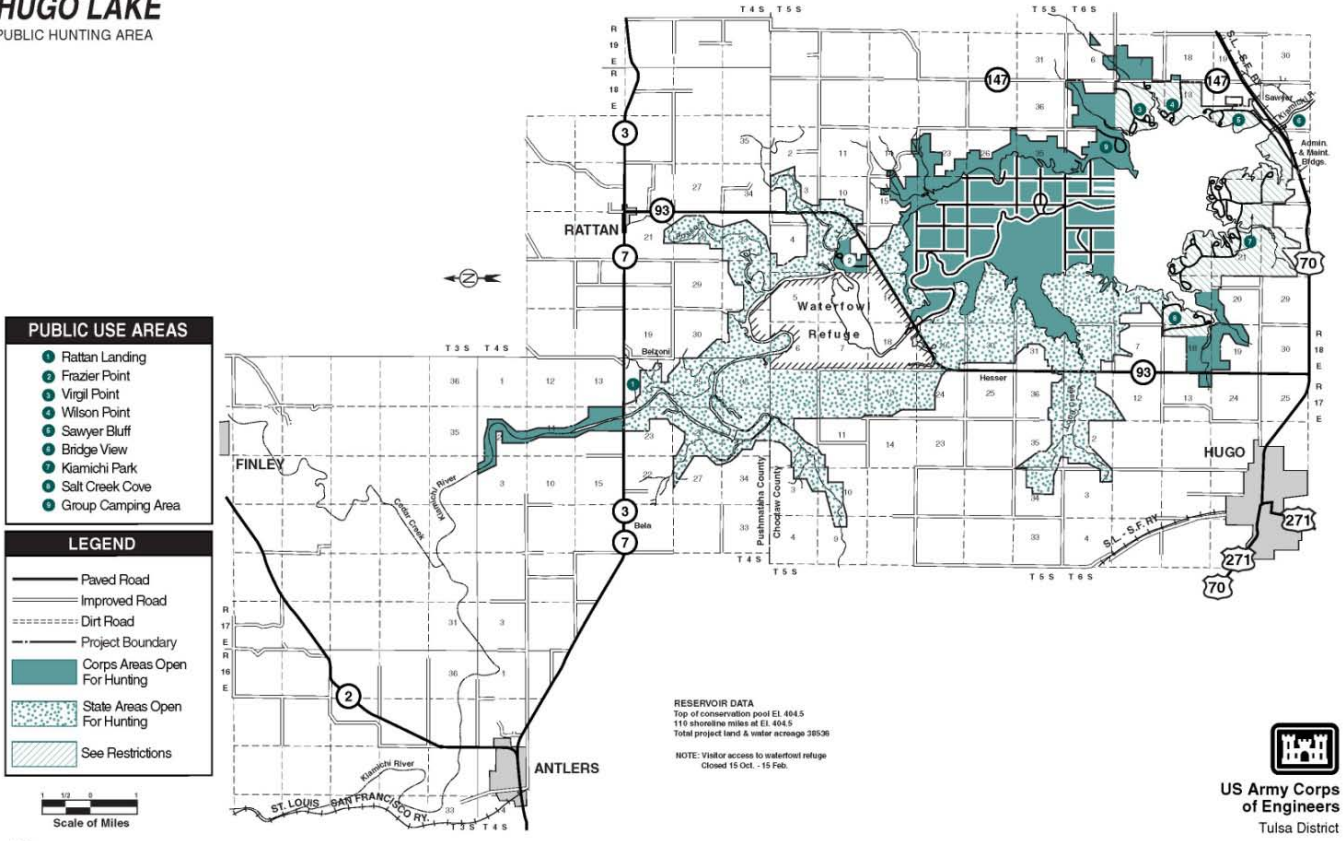
**FY 2013 Budget:** The FY 2013 President's budget will be used for routine operations and maintenance activities at this project.

**COMPLETION:** N/A. Operating project.

**For more information** regarding the Hugo Lake project, contact Chris Lynch, Lake Manager, at (580) 326-3345 or [Christopher.Lynch@usace.army.mil](mailto:Christopher.Lynch@usace.army.mil).

# PROJECT MAP HUGO LAKE, OKLAHOMA

**HUGO LAKE**  
PUBLIC HUNTING AREA



**U.S. ARMY CORPS OF ENGINEERS – TULSA DISTRICT**  
[www.swt.usace.army.mil](http://www.swt.usace.army.mil)