

Southwestern Division “Pacesetters”



US Army Corps of Engineers
BUILDING STRONG®



Corps of Engineers Footprint



Europe District

9 Divisions

Northwestern
South Pacific
Southwestern
North Atlantic
South Atlantic
Pacific Ocean
Great Lakes
Mississippi Valley
Transatlantic

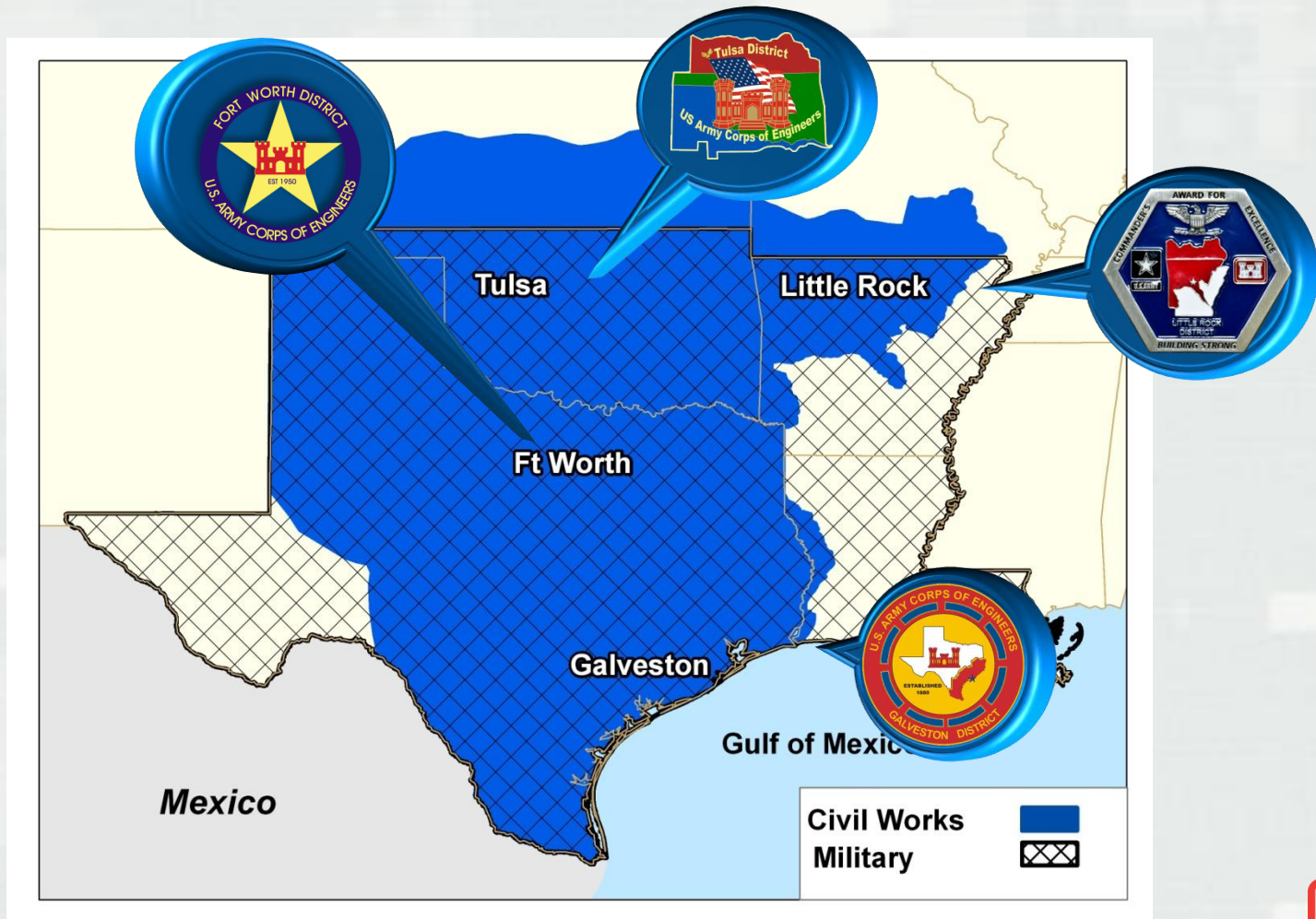


45 Districts



BUILDING STRONG®

Southwestern Division Footprint



BUILDING STRONG®

Southwestern Division Leadership Team



Brig. Gen. David C. Hill
SWD Commander



Colonel Richard J. Muraski, Jr.
SWD Deputy Commander



Mr. Robert E. Slockbower, SES
Director of Programs



Mr. Pete G. Perez, SES
Director of Regional Business



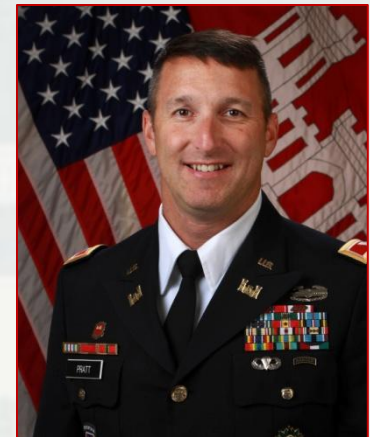
Lt. Col. William N. Craig, III
Fort Worth District
Acting Commander



Colonel Richard P. Pannell
Galveston District Commander



Colonel Courtney Paul
Little Rock District Commander



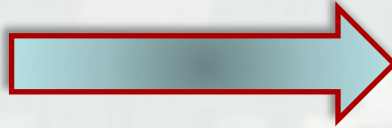
Colonel Richard A. Pratt
Tulsa District Commander



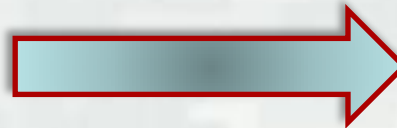
BUILDING STRONG®

Southwestern Division Major Mission Areas

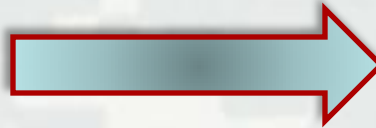
Civil Works



Military Programs



Interagency &
International Services



BUILDING STRONG®

Civil Works Mission Areas

Water Supply

- Water storage enough to provide water to 4.5 million people or
- More than 70% of the Corps water supply



Lake Lavon, Texas

Inland Navigation (MKARNS & GIWW)

- MKARNS: 18 locks & dams
- 423 miles of GIWW



Bull Shoals Powerhouse
Arkansas

Hydroelectric Power

- 18 power plants in 6 states produce 6.7 billion kw hours
- 87% of regional capacity, second in the Corps
- Generates power to 8 million customers in six states

Recreation

- 20 percent of the Corps' total recreation projects located within the regional boundary
- 75 million visitors at 90 operating projects located in five states



Eufala Lake, Oklahoma

Navigation (Ports and Channels)

- 3 of the Nation's "Top Ten" ports
- 32 channels (15 deep draft, 17 shallow draft)
- More than 500 M tons of commerce annually



Houston Ship Channel

Flood Damage Reduction

- 74 flood damage reduction lakes/reservoirs
- 33.22M acre-feet of flood storage
- 760 miles of local flood protection projects
- \$85 B in cumulative flood damage prevention



Dallas Floodway

Regulatory (work in waters & wetlands)

Regulators examine soils on a wetland delineation field visit.



BUILDING STRONG®

Military Missions

- Engineering
- Construction
- Installation Support
- Environmental Engineering/services
- Interagency & International Services



Support to Department of Homeland Security



BRAC Program - Fort Bliss



**San Antonio Military
Medical Center**



Medical Education & Training Complex (METC)
Dorm #1
Lackland AFB



**Air Defense
Artillery
School
Fort Sill**



**Little Rock AFB
Security Forces
Operations Facility**



Future Fort Hood Hospital

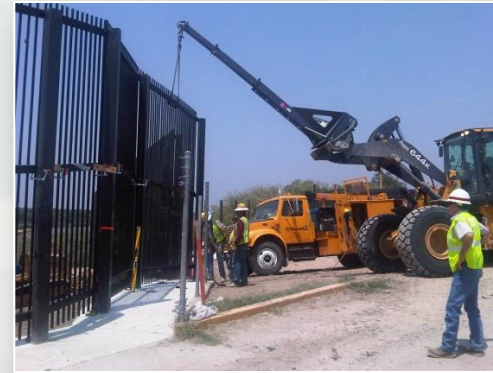


Interagency & International Services

Nogales, Ariz., Border Fence Replacement



Eagle Pass, Texas, Border Fence Construction



High Explosive Pressing Facility, Pantex Plant, OK



Ajo, Ariz., Border Patrol Station



Pittsburg, N.H. Land Point of Entry



BUILDING STRONG®

Connect With Us!



Facebook:

www.facebook.com/swdusace



Twitter:

www.twitter.com/usace_sw_d



Flickr:

www.flickr.com/usaceswd

DVIDS:



www.dvidshub.net/unit/USACE-SWD

Online:

www.swd.usace.army.mil



BUILDING STRONG®